

# Rayaldee® Access and affordability.



**Commercial insurance:** Rayaldee® is covered by payers representing nearly 80% of the U.S. commercially insured patients.<sup>†</sup> Eligible commercially insured patients pay **\$0**.<sup>1</sup>

## TRICARE:

**\$76 copay** for up to a 90-day supply via TRICARE® Pharmacy Home Delivery.<sup>2</sup>  
**\$76 copay** for up to a 30-day supply via TRICARE® retail network pharmacy.<sup>2</sup>

**Medicaid:** Rayaldee® is covered by payers representing nearly 100% of the U.S. Medicaid insured population.<sup>†</sup> Coverage requirements vary by payer. Eligible Medicaid patients pay **\$0 - \$5 per fill**.<sup>3</sup>

## Medicare Part D:

Medicare Part D enrollees will pay **\$0** for their covered prescription drugs for the rest of the calendar year after reaching their **\$2,000 out-of-pocket cap**.<sup>5</sup>

## Low Income Subsidy:

(LIS, Dually Eligible, Medi-Medi, Extra Help)

Eligible LIS patient out-of-pocket cost is **\$0 - \$12.15 per fill**.<sup>4</sup>  
(not subject to the \$2,000 out-of-pocket cap)

## OPKO CONNECT

### RAYALDEE® PATIENT ASSISTANCE PROGRAM (PAP)

**OPKO Connect** has a Rayaldee® Patient Assistance Program (PAP) that offers free medication for patients without pharmacy insurance coverage or unable to afford their Rayaldee® copay. Eligibility criteria apply and annual re-enrollment is required.<sup>††</sup>

**REAL SUPPORT FOR YOUR PATIENTS**



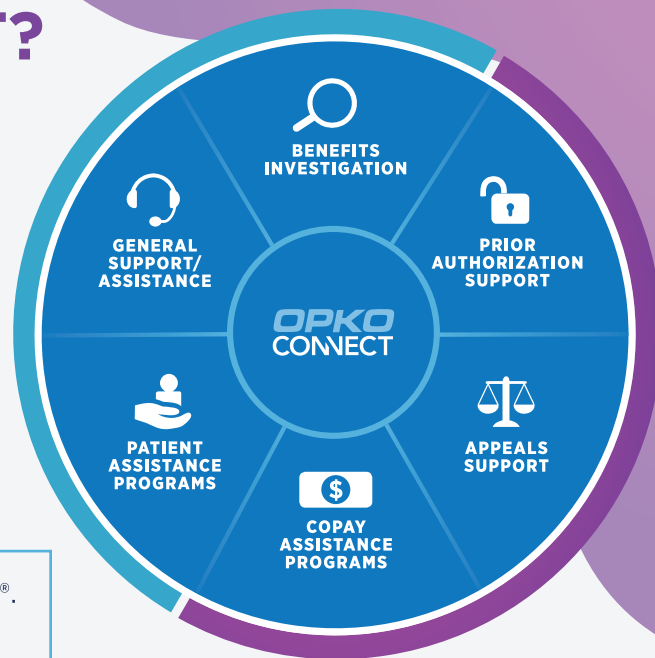
1. Eligible commercially insured patients can fill their Rayaldee prescription for \$0 with eVoucherRx™, a program from RelayHealth that automatically applies copay savings at patient's pharmacy. If the patient's pharmacy does not work with RelayHealth eVoucherRx™, then OPKO Connect has a \$0 copay program for eligible commercial insured patients.
  2. TRICARE® Cost and Fees 2025 Preview: [https://tricare.mil/-/media/Files/TRICARE/Publications/FactSheets/CostsFees\\_FS\\_2025\\_Preview\\_508c\\_FINAL\\_110824.pdf](https://tricare.mil/-/media/Files/TRICARE/Publications/FactSheets/CostsFees_FS_2025_Preview_508c_FINAL_110824.pdf). Date accessed: February, 2025.
  3. Each state Medicaid program is different and will determine the out-of-pocket cost.
  4. OPKO Connect and Specialty Pharmacy case data, February, 2025.
  5. CMS.gov Part D Improvements: <https://www.cms.gov/inflation-reduction-act-and-medicare/part-d-improvements>. Date accessed: February, 2025.
- <sup>†</sup> Managed Markets Insight & Technology as of February, 2025.  
<sup>††</sup> Patient must be prescribed RAYALDEE for on-label usage and patient combined household income must be no more than 200% of the Federal Poverty Level (FPL).

# What is OPKO CONNECT?

**OPKO Connect** is a patient reimbursement hub offering support for your office on behalf of your patients who have been prescribed **Royaldee®**.

**Services include:**

- Benefits investigation
- Prior Authorization (PA) or Formulary Exception support
- Support for appeals if the PA or Formulary Exception is denied
- Copay assistance
- Patient Assistance Program (PAP)
- Contact with patients to help maintain adherence to therapy



Contact **OPKO Connect** to help your patients receive Royaldee®.

**Phone:** 1-844-414-OPKO (6756)

**Email:** [opkoconnect@rxallcare.com](mailto:opkoconnect@rxallcare.com)

**Hours:** Monday through Friday, 8 am to 8 pm ET

## Get started. **Prescribe Royaldee® (calcifediol) today!**

**SCAN TO LEARN MORE**

**Option 1:** via **OPKO Connect** by sending a Service Request Form (SRF)

**Option 2:** via your preferred specialty pharmacy by sending a prescription

Visit [www.royaldee.com/hcp-financial-support/](http://www.royaldee.com/hcp-financial-support/) to download the **Service Request Form** and to find additional information about **OPKO Connect** support.



**INDICATION AND LIMITATIONS OF USE:**

Royaldee® (calcifediol) extended-release 30 mcg capsules is indicated for the treatment of secondary hyperparathyroidism in adults with stage 3 or 4 chronic kidney disease and serum total 25-hydroxyvitamin D levels less than 30 ng/mL. Royaldee® is not indicated in patients with stage 5 chronic kidney disease or end-stage renal disease on dialysis.

**IMPORTANT SAFETY INFORMATION:**

• **Hypercalcemia:** excessive administration of vitamin D compounds, including Royaldee®, can cause hypercalcemia and hypercalciuria. Severe hypercalcemia due to substantial overdosage of vitamin D and its metabolites may require emergency attention. Patients should be informed about the symptoms of elevated calcium. • **Digitalis toxicity:** potentiated by hypercalcemia of any cause. Monitor serum calcium and signs and symptoms of digitalis toxicity more frequently when initiating or adjusting the dose of Royaldee®. • **Adynamic bone disease:** monitor for abnormally low levels of parathyroid hormone (PTH) levels when using Royaldee® and adjust dose if needed. • The most common adverse reactions (≥3% and more frequent than placebo) were anemia, nasopharyngitis, increased blood creatinine, dyspnea, cough, congestive heart failure and constipation. • Care should be taken while dosing Royaldee® with cytochrome P450 inhibitors, thiazides, cholestyramine or drugs stimulating microsomal hydroxylation due to the potential for drug interactions. • Serum calcium should be below 9.8 mg/dL before initiating treatment. • Monitor serum calcium, phosphorus, 25-hydroxyvitamin D and parathyroid hormone (PTH) 3 months after starting therapy or changing dose.

**Please see Important Safety Information and Full Prescribing Information available at [www.royaldee.com](http://www.royaldee.com).**

RAYALDEE® is a registered trademark of Eirgen Pharma Ltd. OPKO Renal is a division of OPKO Health, Inc. © 2025 OPKO Pharmaceuticals, LLC. All rights reserved. OP-US-0579-012025v.6

**OPKO RENAL**  
A DIVISION OF OPKO HEALTH, INC.